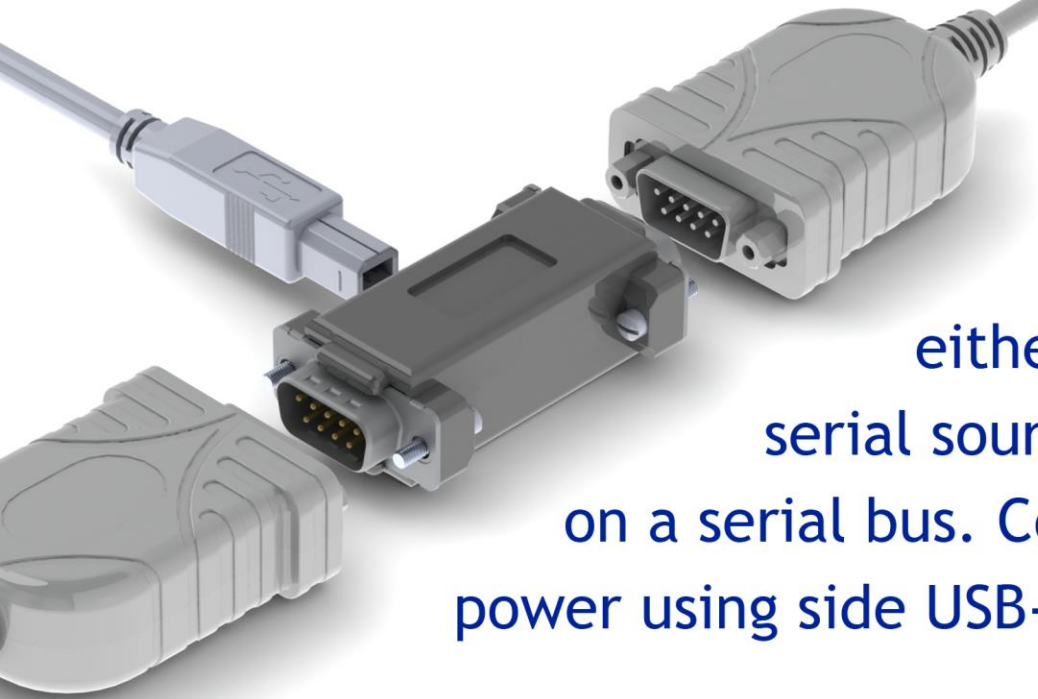


AIRDRIVE SERIAL LOGGER QUICK START



Important tips:

- Device requires 5V DC power through USB-B connector
- To access data, connect to Wi-Fi network **AIR_XXYYZZ** and open **192.168.4.1**
- Device needs to be configured to match monitored serial bus



Connect the device either to a single serial source, or in-line on a serial bus. Connect 5V DC power using side USB-B connector.

Connect to WiFi network

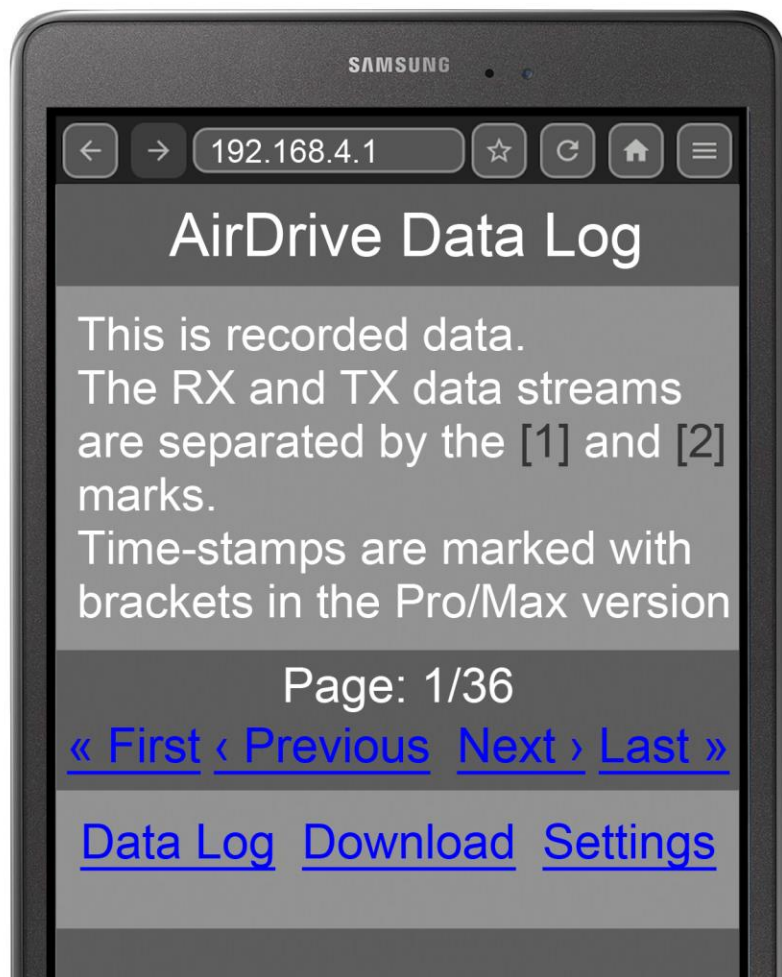
AIR_XXYYZZ

where XXYYZZ is a distinctive device ID

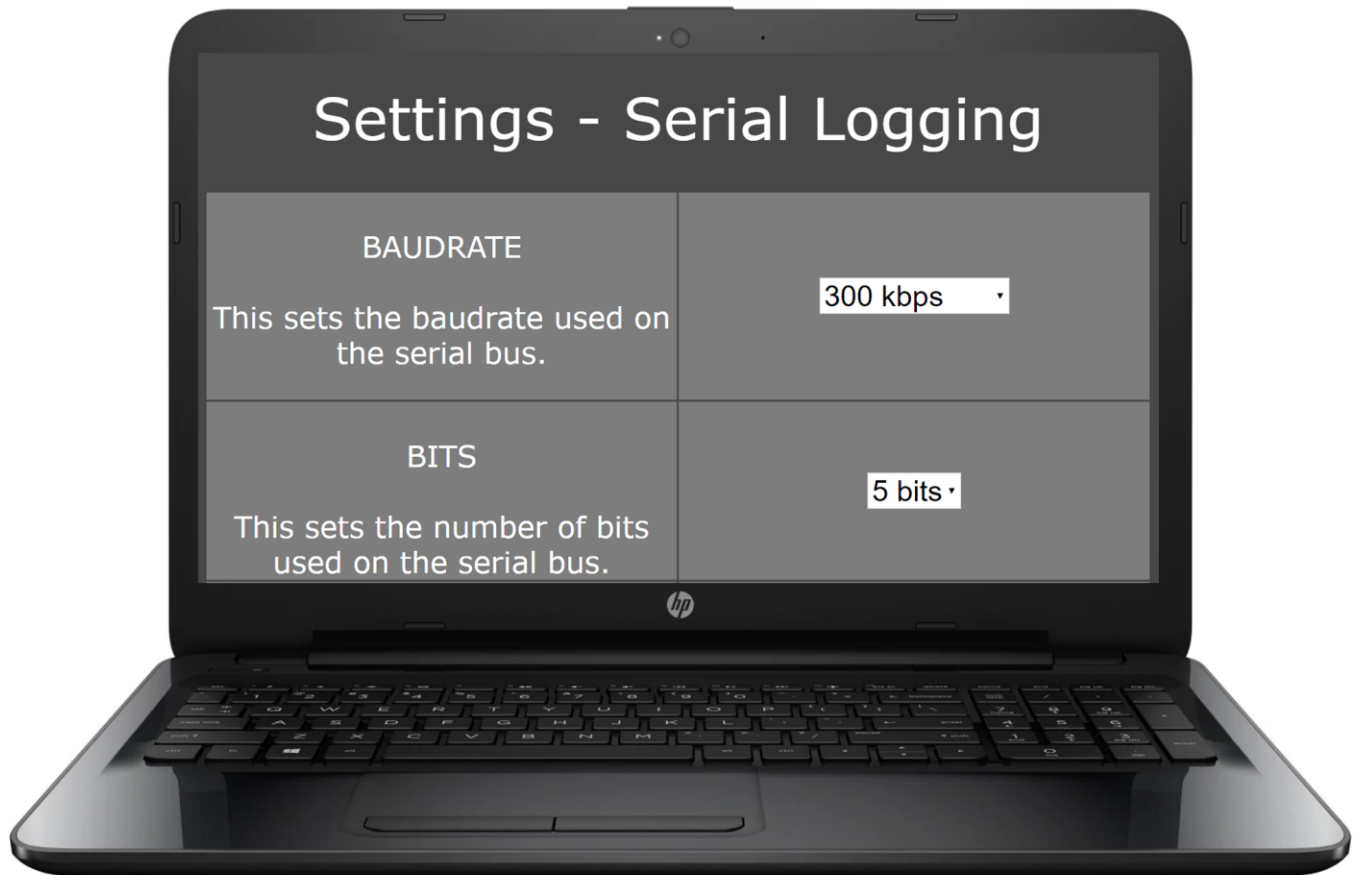
Use any web browser to open address
192.168.4.1

Information:

the device is actually a WiFi Access Point to which you can connect using a laptop, tablet, smartphone, or desktop



Open the settings subpage
to configure the device



**Memorize your password in case you change it.
Otherwise access to the device will be impossible!**

Baudrate, parity, bit count,
and stop bits must match the
actual serial bus configuration

Open the advanced settings subpage to access features of the PRO and MAX versions

W I - F I D E V I C E

- Enables Internet connection via Access Point
- Necessary for other Pro features to work

T I M E - S T A M P I N G

- Gets current time and date from NTP server
- Enables time-stamping throughout data log

E M A I L R E P O R T I N G

- Requires SMTP Email account
- Enables periodical Email reports with logged data

D A T A S T R E A M I N G

- Enables logged data to get streamed over UDP
- Client-side receiver application available on device

The MAX version can be switched to a full-featured USB flash drive.
In flash drive mode the data log is available in file LOG.TXT